



DECEMBER 2025

4-H Family News

Washtenaw County



Last Weekend of 4-H Holiday Tree Sale: Volunteers Needed



Saturday and Sunday, December 6th and 7th, are the last days of the 4-H Advisory Council Holiday Tree Sale.

The sale will be held at the Washtenaw Farm Council Grounds, 5055 Ann Arbor-Saline Rd, Ann Arbor, MI 48103, in Building G on Saturday from 8 am to 5 pm and Sunday from 10 am to 5 pm.

This great event supports Washtenaw County 4-H in many ways by funding scholarships and outreach.

Sign up a 4-H'er or 4-H Volunteer here:
<https://www.signupgenius.com/go/20F0949A5AC2EA2F49-60040370-2025#/> (we do need adults for each shift to help younger 4-H members)

We also encourage families to come out to purchase a tree or wreath from the sale.

CONTACT US

Amy Harris

4-H Program Coordinator

harr1976@msu.edu

Jenny Speyer

4-H Program Instructor

speyerje@msu.edu

705 N. Zeeb Rd.,
P.O. Box 8645
Ann Arbor, Michigan
48107

PHONE & EMAIL:

734-997-1678

msue.washtenaw@county.msu.edu

WEBSITE:

<https://www.canr.msu.edu/washtenaw/>

UPCOMING EVENTS & MEETINGS:

Tractor Supply Company 4-H Paper Clover Campaign

November 28th – December 14th

4-H Advisory Council Holiday Tree Sale

December 6th & 7th at the Washtenaw Farm Council Grounds

Livestock & Dairy Committee Meeting

December 11th at 7 pm at the MSU Extension Office

MSU Extension Office Closed

December 24th-January 5th

Advisory Council Meeting

January 8th at 7 pm at the MSU Extension Office

Michigan State University Extension programs and materials are open to all without regard to race, color, national origin, gender, gender identity, religion, age, height, weight, disability, political beliefs, sexual orientation, marital status, family status or veteran status. Issued in furtherance of MSU Extension work, acts of May 8 and June 30, 1914, in cooperation with the U.S. Department of Agriculture. Quentin Tyler, Director, MSU Extension, East Lansing, MI 48824. This information is for educational purposes only. Reference to commercial products or trade names does not imply endorsement by MSU Extension or bias against those not mentioned.



COUNTY 4-H NEWS

Washtenaw County 4-H Dairy Team Members Harper Jane Adkins & Raelyn Bristle Compete in the National 4-H Quiz Bowl Contest



Two of our Washtenaw County 4-H Dairy Team members, Harper Jane Adkins and Raelyn Bristle (pictured to the left) along with two other Michigan youth made the journey to Louisville Kentucky to compete in the National 4-H Quiz Bowl Contest during the North American International Livestock Exposition. The team placed fifth in the contest!

Great job representing Washtenaw County, Michigan and the 4-H Dairy Program!

Thank you to 4-H leaders Valisa Bristle and Erica Drake for making the journey down and supporting them along with Katelyn Packard for coaching this team.

Pictured to the Right: Valisa Bristle, Erica Drake, Harlee Bristle, Raelyn Bristle, and Harper Jane Adkins



More Washtenaw County 4-H Youth Participate in the Michigan Farm Bureau High School Discussion Meet



This year we had 5 Washtenaw County 4-H youth participate in the Michigan Farm Bureau High School Discussion Meet. Coached by 4-H Leader, Mandy Rogers, three youth participated on behalf of 4-H, Harper Jane Adkins of Saline 4-H Farmers, Raelyn Bristle of Townline Workers, and Grace Weidmayer of Country Expressions. Additionally, Stevie Garcia and Johnny Ringbloom of Saline 4-H Farmers participated through FFA. All five did a great job, and Harper Jane Adkins will be moving on to the State Competition in December. Congratulations to all of these youth!



COUNTY 4-H NEWS

Interested in Joining our Washtenaw County 4-H Hippology and/or Horse Judging Teams?

Washtenaw County 4-H is looking for registered 4-H members (ages 5-19) to join our Hippology Team and/or Horse Judging Team! The Michigan 4-H/FFA State Horse Judging Contest will be on April 11th and the Michigan 4-H State Hippology Contest will be on April 12th in 2026. Hippology is the study of all horse-related knowledge, including judging, anatomy, breeds, colors, care, equipment, tack, health and welfare, and riding disciplines. Horse Judging is your opportunity to become the judge and place horses based on conformation (halter) and performance (riding).



Both teams compete against other Michigan counties and senior divisions can qualify for the national contest. Cost is roughly \$23 per member, per team. Optional study sessions will start in early February.

If you are interested in participating on both/either teams, please contact Angela Oakman by January 31, 2026 - email: angela_oakman@yahoo.com cell: 734-395-9714 (call or text).

The Practice Horse Judging Workshop (TBD on the date of this event but it is usually in early February) is highly recommend for anyone participating on the Horse Judging team. [Check out the MSUE website for more information.](#)

Washtenaw County 4-H Ambassadors is Back!



We are excited to announce that 4-H Ambassadors will be coming back to Washtenaw County 4-H! 4-H Ambassadors represent and promote 4-H, as well as assist with county-wide activities. A 4-H Ambassador is a motivated individual who seeks to become a leader, mentor and teacher, inspiring positive change in their community.

If you or someone you know between the ages of 12-19 years old would like to participate, please encourage them to come to **our next meeting on Wednesday January 14th at 6:30 pm at the MSU Extension Office**. This is open to all 4-H members no matter your project, previous experiences, or leadership roles.

If you have questions, please contact Jessica Kipfmiller by email or phone at thekipfmillers@aol.com or 734-323-6217.



COUNTY 4-H NEWS

Washtenaw County 4-H'er Shepherd Thompson Joins the Michigan 4-H Foundation Board



[Shepherd Thompson, a Washtenaw County 4-H member of S & L Bauernhof 4-H Club, was elected to a three- year term as a Michigan 4-H Foundation youth trustee this October.](#)

Founded in 1952, the Michigan 4-H Foundation is a 501(c)(3) non-profit fundraising organization based in East Lansing, Mich. Led by a [board of trustees](#), the foundation solicits, manages, grants and stewards support from private individuals, organizations, foundations and corporations to support Michigan 4-H Youth Development programs.

Shepherd has not only been active in our county program but also participated in World Food Prize Michigan Youth Institute.

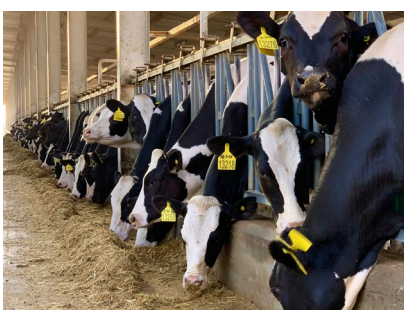
His early distinction as a top-ranked participant in this 4-H pre-college program in seventh grade, followed by his selection as a 2024 Global Youth Institute delegate in ninth grade, reflects a deep commitment to using research and dialogue to tackle food insecurity and sustainability. Congratulations Shepherd! Thanks for your willingness to serve in this role and provide a youth perspective to the Michigan 4-H Foundation.

4-H Small Engine SPIN Club is Back in 2026!

Calling all young builders, tinkerers, and curious minds (ages 8-19)! Starting January, join us for a 5-week Small Engine Club and get hands-on with the inner workings of small engines! We are still working on dates, but this SPIN club will be held at the MSU Extension Office on Sundays. Learn how engines work, explore their systems and parts, and master routine maintenance and repairs. Keep your eyes out for more information coming soon!



Join the Washtenaw County 4-H Dairy Quiz Bowl Team!



Do you know a 4-H'er interested in dairy science, dairy production, or veterinary science? Encourage them to join the Dairy Quiz Bowl Team! The group meets the 3rd Monday of each month January through July. They discuss dairy science and dairy production topics. The material is also very relevant to youth interested in vet science. Meetings are at Horning Farms in Manchester and the first meeting is Monday, January 19th. Interested in participating? Please contact Katelyn Packard at klhorning14@gmail.com.



COUNTY 4-H NEWS

Register for Spark and Share Summit in Frankenmuth on Saturday March 7th



The Southeast Region of Michigan Association of Extension 4-H Youth Staff invites you to the **2026 Spark and Share Summit** March 7th at Bavarian Inn Lodge and Conference Center.

This 1-day workshop that brings together volunteers and teen leaders to learn new projects and information that they can take back to teach and share in their local 4-H program. Participants can network with other 4-H members and volunteers throughout the day to gain new ideas and reenergize their passion for 4-H. The conference will include selection of up to 4 breakout sessions, lunch, and an opening and closing session.

The conference is scheduled for 1-day, but participants have the option to individually make reservations to spend the weekend.

Registration is \$75 and includes lunch. Washtenaw County 4-H has funds for scholarships, so if you are interested in attending and want a scholarship, please contact Jenny Speyer at speyerje@msu.edu before you register. To find out more or register here: <https://events.anr.msu.edu/SparkShare2026/>

Tractor Supply Company Paper Clover Campaign: Opportunity for Clubs

From November 28th – December 14th, Tractor Supply Company (TSC) customers across the nation will have the opportunity to support 4-H youth by purchasing a \$1 clover at checkouts when shopping both in stores or online during the campaign dates. If your club is interested in helping support the clover campaign, you can reach out to your local TSC to see if you can set up a table during the sale. You can also support 4-H by purchasing three special commemorative 4-H holiday ornaments, now in TSC stores! Proceeds from the sale of ornaments support 4-H.



4-H Mini Horse Program Interest Survey



Washtenaw County 4-H would like to know if there is interest in expanding our Miniature Horse Program! We have the opportunity to offer workshops in county this winter and next spring for youth and their miniature horses and donkeys. Get that little buddy out and learn to get ready for showing at the 4-H Youth Show next year! Showmanship, Liberty, Jumping and Trail will all be addressed!

Want to join the fun? Please complete the survey here:

<https://forms.gle/SjKHWtveYzBP2Y479>



COUNTY 4-H NEWS

Save the Date Washtenaw County 4-H Horse Association Tack Sale Feb 22nd



Washtenaw County 4-H Horse Association is once again hosting their annual Tack Sale on Sunday, February 22nd from 10 am – 2 pm at the Washtenaw Farm Council Grounds, 5055 Ann Arbor-Saline Rd, Ann Arbor, MI. This is a great chance to get new & used tack and so much more! A 3\$ donation at the door along with vendor fees will be used to support the Washtenaw County 4-H Horse Association programs and events. [Check out the full flyer here.](#)

First tables are \$25 and additional tables are \$15 each. 4-H members get a \$5 discount on tables. The deadline to register and send in payment is February 2nd and a late fee of \$10 per table will be charged for all registrations received after February 2nd. No registrations will be accepted after February 18th.

If you are interested in selling, [please complete our online form.](#)

If you need assistance completing the online form, please contact Aylssa Couch at aylssacouch@gmail.com or via text at 734-767-4470.

Washtenaw County 4-H Recognition Program Recap

We had a great turn out for the Washtenaw County 4-H Recognition Program on November 2nd where we recognized 4-H youth, 4-H leaders and volunteers, and community supporters. We had a packed house and appreciate all the folks who came out to celebrate everyone.

We want to thank Junior Livestock and 4-H Advisory Council for helping set up this event and making popcorn. We are also grateful to the 4-H Youth who served as our program announcers including: Raelyn Bristle, Max Girbach, Lily LeBlanc, Genevieve Peale, Westin and William Rogers, and Shepherd and Rock Thompson.



We also want to thank Junior Livestock along with Junior Livestock Advisory Kathy Grau and Mary Hammer for delivering our Meritorious Service/Friend of 4-H Award to SteeleGrafix (Dawn and Denny Steele) and when they were unable to attend the awards.

Also thank you to Washtenaw County Farm Bureau for loaning us their photo booth and Washtenaw Farm Council for hosting us. Check out more photos and winners on the next page!

COUNTY 4-H NEWS

Washtenaw County 4-H Recognition Program Photos (L to R)



Key Club Winners: Sydnee Short, Harper Jane Adkins, and Genevieve Peale



Leader of the Year 2025:
Valisa Bristle



Scholarship Winners: Amy Sweet, Lizzie Pantolin, Genevieve Peale, Rebekah Murillo, Madelyn Buckley, Olivia Atkins, Jonathan Buckley, Stephen Garcia, Valorie Hieber, & Jolene Line (Not pictured: Olivia Berenson, Nathan Dubnicki)



I Dare You Winners: Stephen Garcia & Allison Kingman



(Above) Leaders Years of Service: LeAnn McNutt (5), Tammy Broesamle (15), Marie King (20), Jerry Bima (25), and Dan Rosolowski (10).

(Left) Alumni of the Year 2025:
Sarah Yuhasz and Nate Girbach

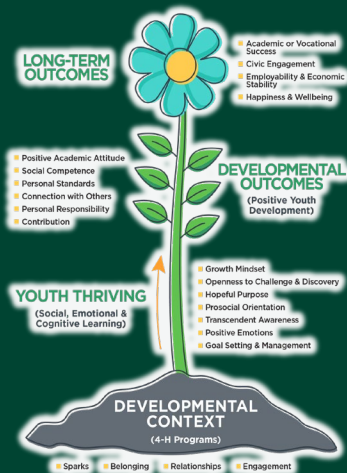


Angel Award Winner 2025:
Angela Oakman



STATEWIDE CALENDAR OF EVENTS

4-H Thriving Model of Positive Youth Development



Have you ever been to a club meeting that starts with a roll call question? Building a sense of belonging in the 4-H community is one of four core concepts of the 4-H Thriving Model that any 4-H program can intentionally do.

We strive to build this welcoming feeling and offer kindness to help develop a sense of belonging throughout project meetings, club meetings, workshops and events offered. What better way to build a community than to find similarities among the membership?

Some of the questions are simple, some are silly, and some can get more involved depending on the purpose of the meeting. Regardless, it's a great way to get to know everyone. Contact your local 4-H staff for more information.

November 28 – December 14: Fall TSC Paper Clover Campaign

Local Tractor Supply Co.

Support 4-H by purchasing a \$1 paper clover at your local Tractor Supply Co. (TSC) store! Seventy-percent of funds raised stay in the local community where the paper clover was purchased.

www.canr.msu.edu/events/tractor-supply-co-paper-clover-campaign

December 2: Giving Tuesday

Online

Join the #GivingTuesday movement — a global day of giving and a chance to celebrate the opportunities that makes 4-H so extraordinary. 4-H'ers are leading the way in a world full of change and together, we can build a generation ready for anything. We have set a goal to raise \$5,000 to grow 4-H county endowments in a 24-hour period.

mi4hfdtn.org/giving-tuesday/

December 9: 4-H Wild Spartans

Online

Join 4-H staff to take a look into life working with fisheries and wildlife! This month's session is "Adventures in Wildlife Medicine: From the Field to the Clinic." Meet Avery Tilley, a veterinary student at the University of Georgia. Learn about his work, and the education and career path he followed to get there. Open to youth ages 12-19.

www.canr.msu.edu/events/4-h-wild-spartans-december

December 13: 4-H Holidays Around the World Workshop – Hanukkah

Jefferson-Barns Community Vitality Center, Westland

Learn, create and celebrate the Festival of Lights! Open to all youth in grades 3–8, this hands-on workshop includes storytelling, candle-making, snacks, games and festive music. Pre-register by December 8.!

www.canr.msu.edu/events/4-h-holidays-workshop-hanukkah

December 20: 4-H Holidays Around the World Workshop – Christmas in Norway

Jefferson-Barns Community Vitality Center, Westland

Celebrate Norwegian Christmas traditions! Open to youth in grades 3–8, this hands-on workshop includes gnome-making, butter-churning and festive cookie decorating. Pre-register by December 15.

www.canr.msu.edu/events/4-h-holidays-workshop-christmas





STATEWIDE 4-H NEWS

Mandatory reporting guidelines for Michigan 4-H volunteers

MSU Extension has updated its mandatory [reporting guidelines](http://www.canr.msu.edu/od/civil_rights_diversity_multiculturalism/civil_rights_compliance) (www.canr.msu.edu/od/civil_rights_diversity_multiculturalism/civil_rights_compliance) to align with MSU's policy (UW-02-01). All volunteers are required to report incidents of child abuse, neglect, or misconduct promptly. Reports should be made to MSU's Office for Civil Rights (MSU OCR) and, when applicable, to Children's Protective Services (CPS)/Department of Health and Human Services. In short, volunteers should:

1. In emergencies: Call 911 immediately.
2. Child abuse/neglect: Call CPS at 855-444-3911 and file [DHS-3200](http://www.michigan.gov/mdhhs/adult-child-serv/abuse-neglect/childrens/mandated-reporters) (available at www.michigan.gov/mdhhs/adult-child-serv/abuse-neglect/childrens/mandated-reporters) within 72 hours.
3. All other incidents: Report to MSU OCR via online form at <https://msu.guardianconduct.com/incident-reporting/>; phone at (517) 353-3922 between the hours of 8:00 a.m.-12:00 p.m. and 1:00-5:00 p.m. Monday through Friday; by mail at 408 W. Circle Dr., Suite 105, Olds Hall, East Lansing, MI 48824; or by email at ocr.isr@msu.edu.
4. Please notify your local MSU Extension staff after submitting a report.

Shop with purpose: 4-H gifts that give back

'Tis the season to spread joy and support 4-H youth while doing it! Consider the following options in your holiday shopping to make the holidays merry, bright and meaningful!

Michigan Shop 4-H Store: Buy your favorite Michigan 4-H apparel, drinkware, and essentials at the SHOP 4-H Online Store! Offered in collaboration with National 4-H Council, the Michigan 4-H store offers Michigan 4-H branded apparel and other gifts for your favorite 4-H'er, volunteer, alumni, professional or fan! A percentage of all proceeds will be donated to Michigan 4-H. Visit <https://bit.ly/30pdNJw>.



My Pottery Place: Get crafty with 4-H pottery! From mugs to ornaments, you can paint your own masterpiece while supporting youth programs—5% of every 4-H licensed pottery purchase goes to 4-H. Learn more at mypotteryplace.com/product-category/all-products/4-h/.

Mickman Brothers: Decorate your home with beautiful greenery and purpose: 15% of the proceeds from each wreath or evergreen purchased at 4hwreaths.com will benefit 4-H.

Twisted X: Step into the season with style! The Twisted X 4-H Collection has shoes for the whole family and 6% of each pair sold supports 4-H! Learn more at twistedx.com/pages/4h-collection.

Georgia Boot: Built for hard work and big dreams, Georgia Boot is a proud supporter of 4-H. Consider giving their boots, which are ready for any adventure, especially a 4-H project! Shop at georgiaboot.com.

Michigan 4-H Dog Showmanship Manual updated

The Michigan 4-H Dog Showmanship Manual has been updated! A major update to the previous version, this guide provides the basic information needed to compete successfully in 4-H dog showmanship classes. Be sure to check out the resources section of the manual for additional useful books, websites and videos.

View the updated manual at www.canr.msu.edu/resources/michigan-4-h-dog-showmanship-manual.





January 2026



Sun	Mon	Tues	Weds	Thur	Fri	Sat
				1	2	3
				Happy New Year! 		
4	5	6	7	8 7pm - 4-H Advisory Council Meeting	9	10
11	12	13 6:30pm - Still Projects Committee Meeting	14 6:30pm - 4-H Ambassadors Meeting	15	16	17
18	19 First Dairy Quiz Bowl Team Meeting	20	21	22 6pm - Small Animal Committee Meeting	23	24
25	26	27 6:30/7pm - Horse Association Meeting	28	29	30	31 Last Day to Sign Up for Hippology/ Horse Judging

We will be announcing the dates and times for our 4-H Small Engine SPIN Club soon!